



SCREEN

WIDE WIDTH

ASPECT

ROLLER AND PANEL BLINDS

A tightly woven, flame retardant screen fabric in 4 neutral commercial colours. Aspect features Greenshield and is a wide width fabric.

Composition: 78% PVC 22% Polyester

Fabric Width: 3m (118")

Weight: 500g/m² (14.7oz/yd²)

Openess Factor: 1%



LOUVOLITE

ASPECT

SOLAR, OPTICAL AND COLOUR FASTNESS PROPERTIES

| | SOLAR | | | OPTICAL | | | UV block | SC | CF | DIM out | G VALUE | | | | G TOT |
|--------------|----------------|----------------|----------------|----------------|----------------|----------------|----------|------|----|---------|---------|------|------|-------|-------|
| | T _s | R _s | A _s | T _o | R _o | A _o | | | | | SG | DG | TG | DG LE | |
| Licorice | 3 | 4 | 93 | 1 | 5 | 94 | 99 | 0.96 | 6 | 3 | 0.69 | 0.67 | 0.53 | 0.56 | 0.22 |
| Wheat | 14 | 65 | 21 | 10 | 75 | 15 | 99 | 0.37 | 6 | 3 | 0.35 | 0.37 | 0.35 | 0.36 | 0.20 |
| Whisper Grey | 11 | 57 | 32 | 6 | 65 | 29 | 99 | 0.45 | 6 | 3 | 0.39 | 0.41 | 0.37 | 0.38 | 0.18 |
| White | 14 | 73 | 13 | 12 | 88 | 0 | 100 | 0.29 | 6 | 3 | 0.31 | 0.33 | 0.33 | 0.33 | 0.17 |

T: % Transmittance
R: % Reflectance
A: % Absorption

UV Block: the % of UV light blocked by the fabric
SC: Shading Co-efficient
CF: Colour Fastness

Dim out:
1 = High light penetration
4 = Low light penetration
5 = Blackout

G Value: amount of heat transmitted through the glazing
SG: Single Glazed

DG: Double Glazed
TG: Triple Glazed
DG LE: Double Glazed Low Emissivity.

GTOT: The amount of heat transmitted through the combination of glass and solar shading.

SOLAR GAIN

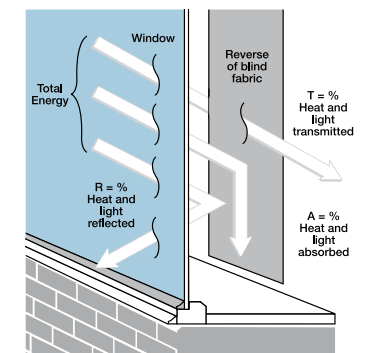
The amount of heat increase resulting from solar energy entering a room. It is the total of three separate parts - the amount of energy transmitted directly into the room, the energy which is absorbed by the blind and the proportion of energy which is absorbed by the window.

SHADING CO-EFFICIENT

The solar heat gain with the blind at the window divided by the solar heat gain with no blind at the window. The lower the shading co-efficient, therefore, the higher the efficiency of the fabric. The test results in the table above have been achieved using a single 6mm glass glazing system.

GTOT

When the G-value (a measure of total solar energy that passes through the glazing system and the blind fabric) of the glazing is combined with the value of the shading.



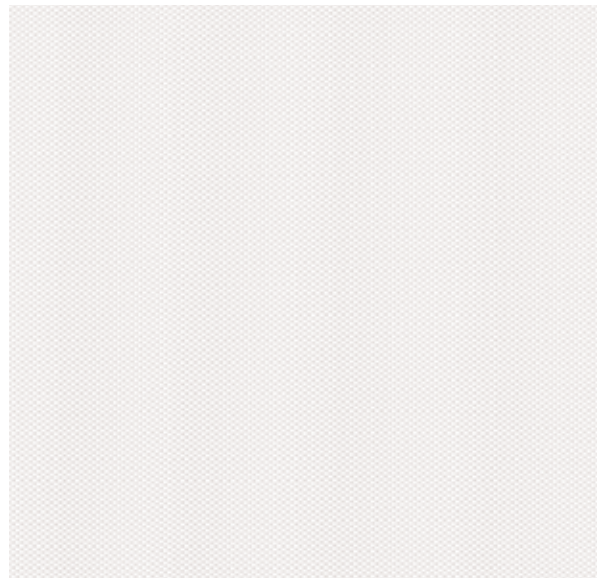
Your Louvolite® Performance Fabrics Distributor:



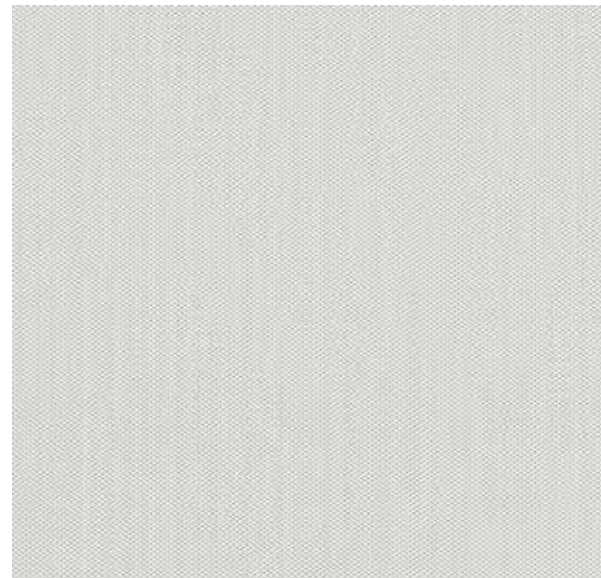
Manufactured in the UK

CI/SfB 1976 reference by SfB Agency

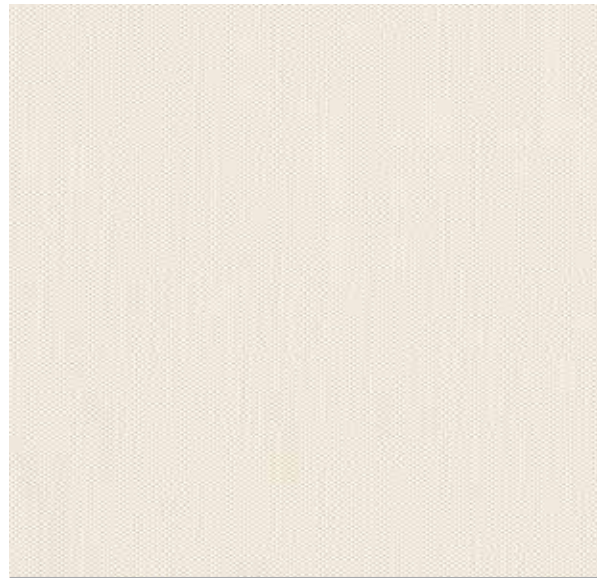
(76.7) X



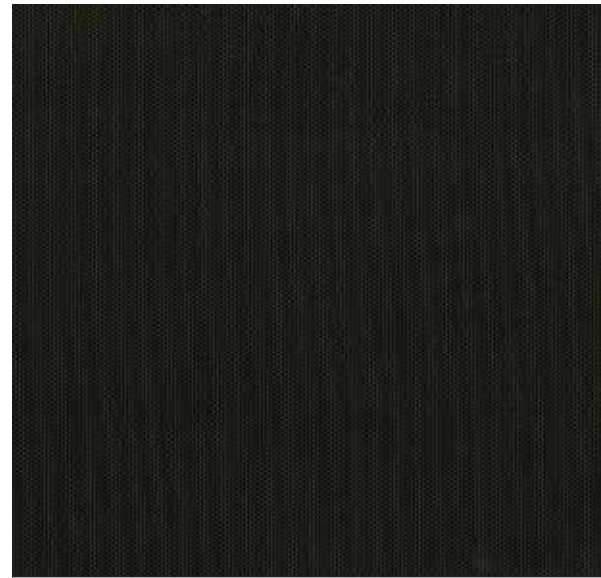
White



Whisper Grey



Wheat



Licorice

ASPECT

Fabric Composition

78% PVC 22% polyester

Fabric Width

3.00m (118")

Openness

1%

Openness factors are for guidance only. For comprehensive performance data please see Louvolite for solar and optical figures.

Fabric Weight

500g/m² (14.7oz/yd²)

Flammability Standards

Aspect meets FR standard BS 5867 Part 2 Type B. Further information is available on request.

Colour Fastness

Tested in accordance with BS EN ISO 105-B01:1999

Cleaning

Aspect fabrics can be wiped clean. See manufacturers instructions. Tested in accordance with BS EN 26330:1994 method 7a.

Greenshield

Fabrics featuring Greenshield have been tested to confirm no harmful VOC's or hazardous substances will be released into the environment in quantities that are recognised as potentially dangerous to occupants of dwellings or buildings.

Properties

