



DIM OUT

COLOURTEX®

ROLLER, ROMAN, VERTICAL AND PANEL BLINDS

A lightly textured, plain, flame retardant fabric in 12 colours.

Colourtex® features Pollergen™ and Greenshield.

Composition: 100% Polyester

Fabric Width: 2.10m (82")

Louvre Width: 89mm (3½") or 127mm (5")

Weight: 285g/m² (8.3oz/yd²)



LOUVOLITE

COLOURTEX®

SOLAR, OPTICAL AND COLOUR FASTNESS PROPERTIES

	SOLAR			OPTICAL			UV block	SC	CF	DIM out	G VALUE				G TOT
	T _s	R _s	A _s	T _o	R _o	A _o					SG	DG	TG	DG LE	
Almond	12	74	14	8	79	13	100	0.29	6+	3	0.30	0.33	0.32	0.33	0.16
Ash	8	60	32	1	50	49	100	0.42	6+	3	0.37	0.39	0.36	0.37	0.17
Azure	6	38	56	0	15	85	100	0.63	6+	4	0.50	0.50	0.43	0.45	0.20
Berry	12	38	50	13	50	37	100	0.63	6+	4	0.51	0.50	0.43	0.45	0.25
Biscuit	10	66	24	3	65	32	100	0.36	6+	3	0.34	0.36	0.35	0.36	0.16
Brownie	8	50	42	0	35	65	100	0.52	6+	4	0.43	0.44	0.39	0.41	0.19
Chocolate	13	33	54	0	7	93	100	0.68	6+	4	0.54	0.53	0.44	0.46	0.27
Cornflower	8	61	31	3	65	32	100	0.41	6+	3	0.37	0.39	0.36	0.37	0.16
Forest	11	35	54	0	14	86	100	0.66	6+	4	0.52	0.52	0.44	0.46	0.25
Granite	11	31	58	0	6	94	100	0.70	6+	4	0.55	0.54	0.45	0.47	0.26
Toffee	8	60	32	1	53	46	100	0.42	6+	3	0.37	0.39	0.36	0.37	0.17
White	12	80	8	10	89	1	100	0.23	6+	3	0.26	0.30	0.31	0.31	0.14

T: % Transmittance
R: % Reflectance
A: % Absorption

UV Block: the % of UV light blocked by the fabric
SC: Shading Co-efficient
CF: Colour Fastness

Dim out:
1 = High light penetration
4 = Low light penetration
5 = Blackout

G Value: amount of heat transmitted through the glazing
SG: Single Glazed

DG: Double Glazed
TG: Triple Glazed
DG LE: Double Glazed Low Emissivity.

GTOT: The amount of heat transmitted through the combination of glass and solar shading.

SOLAR GAIN

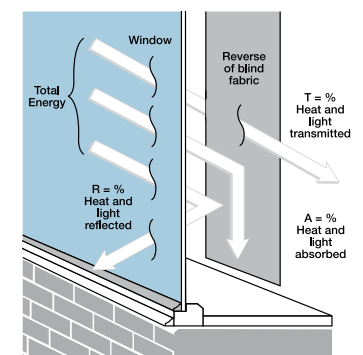
The amount of heat increase resulting from solar energy entering a room. It is the total of three separate parts - the amount of energy transmitted directly into the room, the energy which is absorbed by the blind and the proportion of energy which is absorbed by the window.

SHADING CO-EFFICIENT

The solar heat gain with the blind at the window divided by the solar heat gain with no blind at the window. The lower the shading co-efficient, therefore, the higher the efficiency of the fabric. The test results in the table above have been achieved using a single 6mm glass glazing system.

GTOT

When the G-value (a measure of total solar energy that passes through the glazing system and the blind fabric) of the glazing is combined with the value of the shading.



Your Louvolite® Performance Fabrics Distributor:



CI/SfB 1976 reference by SfB Agency		
(76.7)	X	

COLOURTEX®

Fabric Composition

100% polyester

Fabric Width

2.10m (82")

Vertical Louvre Width

89mm (3½") or 127mm (5")
Other widths available on request

Fabric Weight

285g/m² (8.1oz/yd²)

Flammability Standards

Colourtex® meets FR standard BS 5867 Part 2 Type B. Further information is available on request.

Colour Fastness

Tested in accordance with BS EN ISO 105-B01:1999

Cleaning

Colourtex® fabrics can be wiped clean. See manufacturers instructions. Tested in accordance with BS EN 26330:1994 method 7a.

Pollergen™

Fabrics treated with Pollergen™ help relieve hayfever symptoms. On contact, Pollergen™ treated blinds denature up to 50% of grass pollen entering a room. A deployed blind is the most effective.

Greenshield

Fabrics featuring Greenshield have been tested to confirm no harmful VOC's or hazardous substances will be released into the environment in quantities that are recognised as potentially dangerous to occupants of dwellings or buildings.

Properties



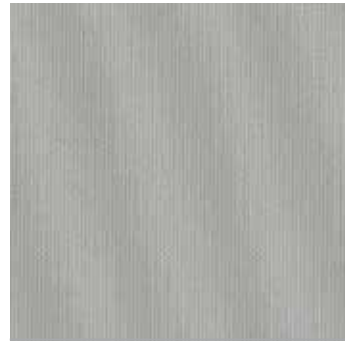
White



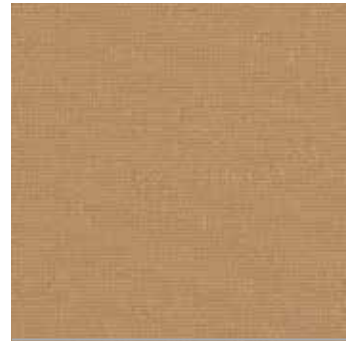
Almond



Biscuit



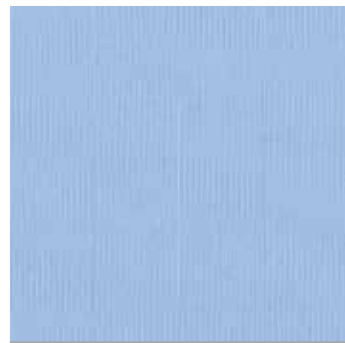
Ash



Toffee



Brownie



Cornflower



Chocolate



Granite



Azure



Forest



Berry

