



DIM OUT SPC

DAPPLE SPC[®]+

ROLLER AND VERTICAL BLINDS

A textured stitch bond, flame retardant, plain fabric in 6 colours. Dapple SPC[®]+ has a solar protective coating which is effective in the reduction of glare entering a room. Dapple SPC[®]+ features SPC[®], Pollergen[™] and Greenshield.

Composition: 100% Polyester

Fabric Width: 2.00m (78")

Louvre Width: 89mm (3½") or 127mm (5")

Weight: 300g/m² (8.8oz/yd²)



DAPPLE SPC[®]+

SOLAR, OPTICAL AND COLOUR FASTNESS PROPERTIES

	SOLAR			OPTICAL			UV block	SC	CF	DIM out	G VALUE				G TOT
	T _s	R _s	A _s	T _o	R _o	A _o					SG	DG	TG	DG LE	
Cream	15	52	33	1	55	44	100	0.50	6+	3	0.43	0.44	0.39	0.40	0.24
Ice	16	53	31	14	56	30	100	0.49	6+	3	0.42	0.43	0.39	0.40	0.24
Linen	10	70	20	5	70	25	100	0.32	6	3	0.32	0.34	0.34	0.34	0.15
Ocean	6	50	44	0	27	73	100	0.52	6	3	0.43	0.44	0.39	0.41	0.17
Slate	11	43	46	3	39	58	100	0.58	6+	3	0.48	0.48	0.41	0.43	0.23
Steel	7	54	39	0	36	64	100	0.48	6	3	0.41	0.42	0.38	0.39	0.17

T: % Transmittance
R: % Reflectance
A: % Absorption

UV Block: the % of UV light blocked by the fabric
SC: Shading Co-efficient
CF: Colour Fastness

Dim out:
1 = High light penetration
4 = Low light penetration
5 = Blackout

G Value: amount of heat transmitted through the glazing
SG: Single Glazed

DG: Double Glazed
TG: Triple Glazed
DG LE: Double Glazed Low Emissivity.

GTOT: The amount of heat transmitted through the combination of glass and solar shading.

SOLAR GAIN

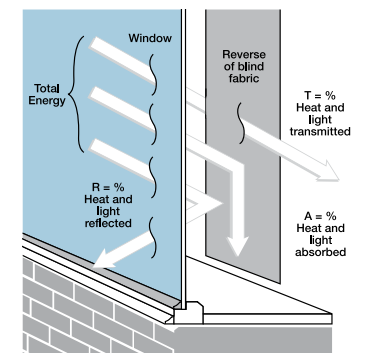
The amount of heat increase resulting from solar energy entering a room. It is the total of three separate parts - the amount of energy transmitted directly into the room, the energy which is absorbed by the blind and the proportion of energy which is absorbed by the window.

SHADING CO-EFFICIENT

The solar heat gain with the blind at the window divided by the solar heat gain with no blind at the window. The lower the shading co-efficient, therefore, the higher the efficiency of the fabric. The test results in the table above have been achieved using a single 6mm glass glazing system.

GTOT

When the G-value (a measure of total solar energy that passes through the glazing system and the blind fabric) of the glazing is combined with the value of the shading.



Your Louvolite[®] Performance Fabrics Distributor:



CI/SfB 1976 reference by SfB Agency		
(76.7)	X	

DAPPLE SPC[®]+

Fabric Composition

100% polyester

Fabric Width

2.00m (78")

Vertical Louvre Width

89mm (3½") or 127mm (5")
Other widths available on request

Fabric Weight

200g/m² (5.9oz/yd²)

Flammability Standards

Dapple SPC[®]+ meets FR standard BS 5867 Part 2 Type B. Further information is available on request.

Colour Fastness

Tested in accordance with BS EN ISO 105-B01:1999

Cleaning

Dapple SPC[®]+ vertical fabrics are machine washable, other Dapple SPC[®]+ fabrics can be wiped clean. See manufacturers instructions. Tested in accordance with BS EN 26330:1994 method 7a.

SPC[®]

A Solar Protective Coating applied to the reverse of the fabric that reduces glare, reflects and filters light more effectively than conventional fabrics.

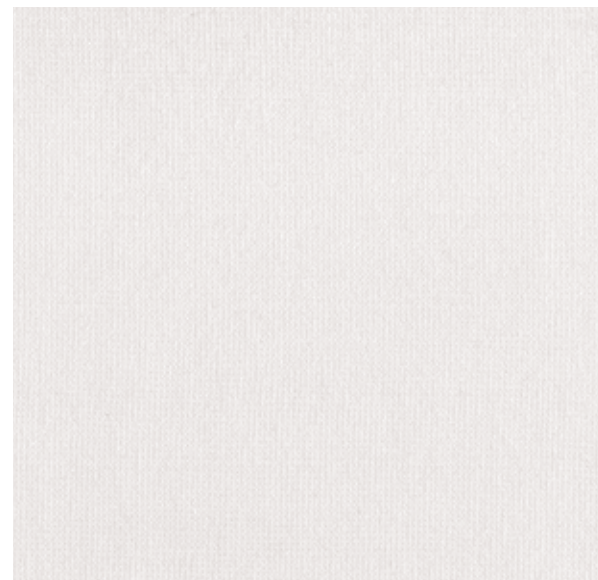
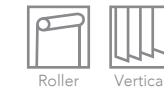
Pollergen[™]

Fabrics treated with Pollergen[™] help relieve hayfever symptoms. On contact, Pollergen[™] treated blinds denature up to 50% of grass pollen entering a room. A deployed blind is the most effective.

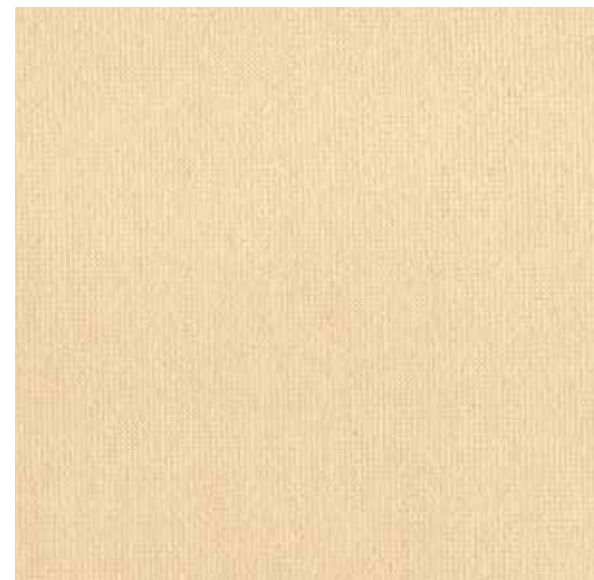
Greenshield

Fabrics featuring Greenshield have been tested to confirm no harmful VOC's or hazardous substances will be released into the environment in quantities that are recognised as potentially dangerous to occupants of dwellings or buildings.

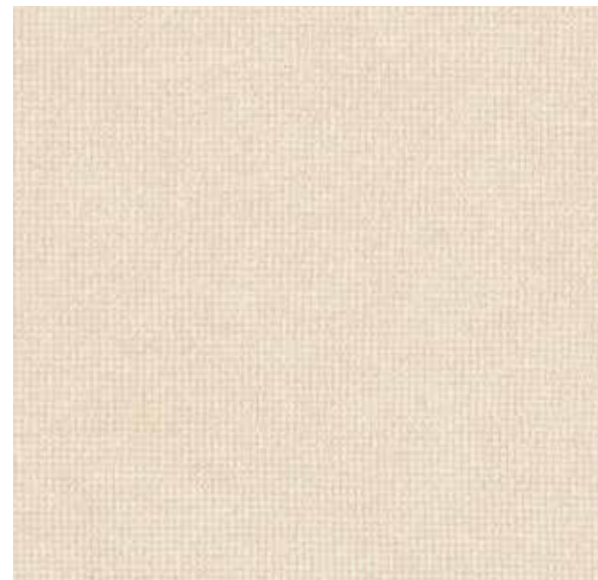
Properties



Ice



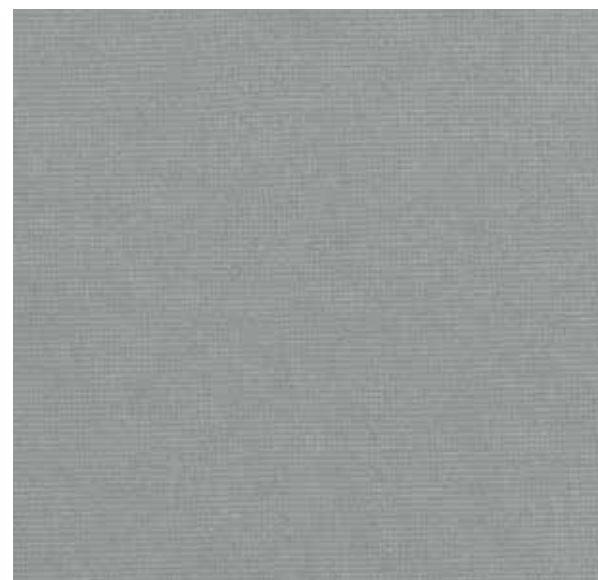
Cream



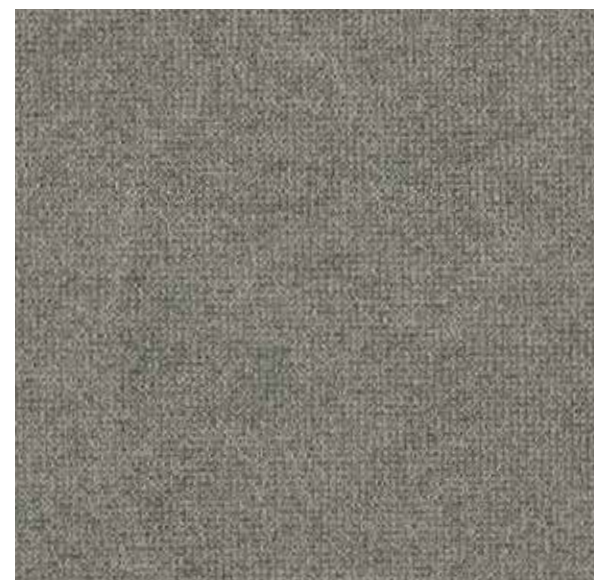
Linen



Ocean



Slate



Steel