



BLACKOUT

## EX-LITE®

ROLLER AND VERTICAL BLINDS

A robust, flame retardant, blackout fabric in 10 colourways.  
Ex-lite® is wipeable and features Ultra-Fresh™\*.

Composition: 72% PVC and 28% glass fibre  
Fabric Width: 1.83m (72")  
Louvre Width: 89mm (3½") or 127mm (5")  
Weight: 450g/m² (13.3oz/yd²)



**LOUVOLITE**

## EX-LITE®

SOLAR, OPTICAL AND COLOUR FASTNESS PROPERTIES

	SOLAR			OPTICAL			UV block	SC	CF	DIM out	G VALUE				G TOT
	T <sub>s</sub>	R <sub>s</sub>	A <sub>s</sub>	T <sub>o</sub>	R <sub>o</sub>	A <sub>o</sub>					SG	DG	TG	DG LE	
Anthracite	0	19	81	0	21	79	100	0.82	6	6	0.60	0.60	0.48	0.51	0.21
Bisque	0	60	40	0	68	32	100	0.42	6	6	0.36	0.39	0.36	0.37	0.10
Black	0	4	96	0	4	96	100	0.96	6	6	0.69	0.66	0.52	0.55	0.25
Canvas	0	74	26	0	86	14	100	0.29	6	6	0.28	0.32	0.32	0.33	0.29
Cream	0	61	39	0	68	32	100	0.41	6	6	0.36	0.38	0.36	0.37	0.10
Light Grey	0	49	51	0	55	45	100	0.53	6	6	0.43	0.44	0.39	0.41	0.13
Navy	0	9	91	0	6	94	100	0.91	6	6	0.66	0.64	0.51	0.54	0.26
Slate	0	27	73	0	30	70	100	0.74	6	6	0.55	0.55	0.46	0.48	0.19
Snow	0	77	23	0	90	10	100	0.26	6	6	0.26	0.26	0.31	0.32	0.06
White	0	69	31	0	77	23	100	0.33	6	6	0.31	0.31	0.34	0.34	0.08

T: % Transmittance  
R: % Reflectance  
A: % Absorption

UV Block: the % of UV light blocked by the fabric  
SC: Shading Co-efficient  
CF: Colour Fastness

Dim out:  
1 = High light penetration  
4 = Low light penetration  
5 = Blackout

G Value: amount of heat transmitted through the glazing  
SG: Single Glazed

DG: Double Glazed  
TG: Triple Glazed  
DG LE: Double Glazed Low Emissivity.

GTOT: The amount of heat transmitted through the combination of glass and solar shading.

### SOLAR GAIN

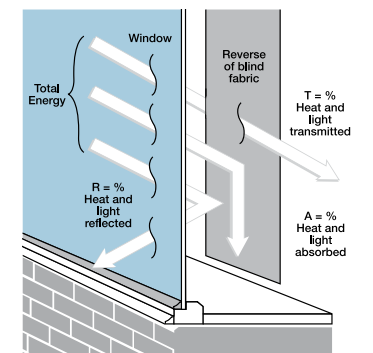
The amount of heat increase resulting from solar energy entering a room. It is the total of three separate parts - the amount of energy transmitted directly into the room, the energy which is absorbed by the blind and the proportion of energy which is absorbed by the window.

### SHADING CO-EFFICIENT

The solar heat gain with the blind at the window divided by the solar heat gain with no blind at the window. The lower the shading co-efficient, therefore, the higher the efficiency of the fabric. The test results in the table above have been achieved using a single 6mm glass glazing system.

### GTOT

When the G-value (a measure of total solar energy that passes through the glazing system and the blind fabric) of the glazing is combined with the value of the shading.

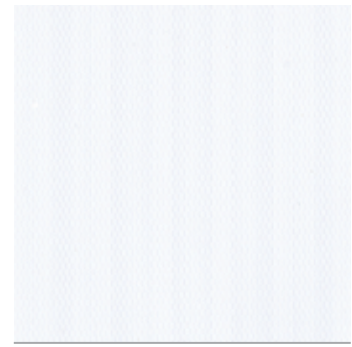


Your Louvolite® Performance Fabrics Distributor:

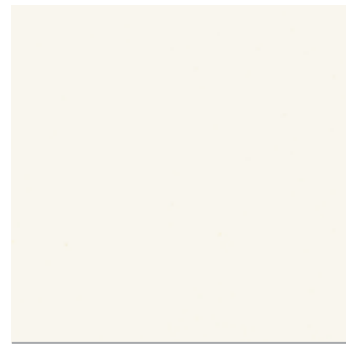


CI/SfB 1976 reference by SfB Agency

(76.7) X



White



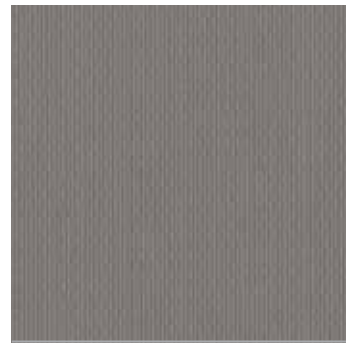
Snow



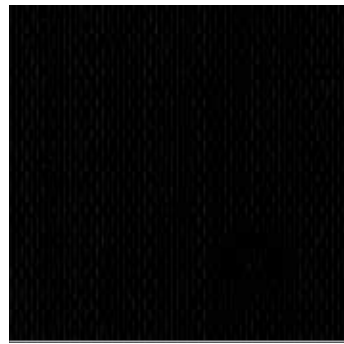
Light Grey



Canvas



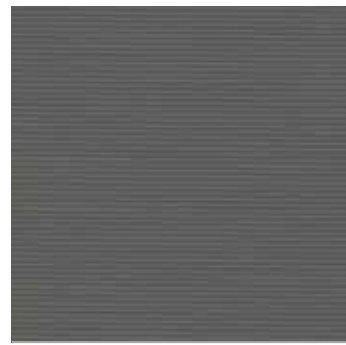
Slate



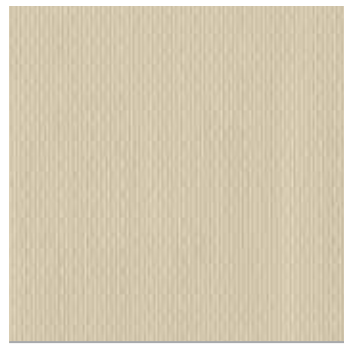
Black



Navy



Anthracite



Bisque



Cream

# EX-LITE®

## Fabric Composition

72% pvc 28% glass fibre

## Fabric Width

1.83m (72")

## Vertical Louvre Width

89mm (3½") or 127mm (5")  
Other widths available on request

## Fabric Weight

450g/m<sup>2</sup> (13.3oz/yd<sup>2</sup>)

## Flammability Standards

Ex-lite® meets FR standard BS 5867 Part 2 Type B.  
Further information is available on request.

## Colour Fastness

Tested in accordance with BS EN ISO 105-B01:1999

## Cleaning

Ex-lite® fabrics can be wiped clean.  
See manufacturers instructions. Tested in  
accordance with BS EN 26330:1994 method 7a.

## Ultra-Fresh™\*

A fabric treated with Ultra-Fresh\* protects against  
the growth of odour causing bacteria and fungi,  
preserving fabric freshness.

\*Ultra-fresh is a registered trademark of Thomson Research  
Associates, Canada.

## Properties



FR



Wipe  
clean



100%



Roller



Vertical



Blackout



Moisture  
resistant

