



BLACKOUT

EX-LITE®+ ROLLER BLINDS

Ex-Lite®+ is a robust, flame retardant, blackout fabric in 4 colours, with an increased width. Ex-lite®+ is wipeable and features an Antimicrobial treatment.

Composition: 72% PVC and 28% glass fibre
Fabric Width: 2.5m (98")
Weight: 450g/m² (13.3oz/yd²)



LOUVOLITE

EX-LITE®+

SOLAR, OPTICAL AND COLOUR FASTNESS PROPERTIES

	SOLAR			OPTICAL			UV block	SC	CF	DIM out	G VALUE				G TOT
	T _s	R _s	A _s	T _o	R _o	A _o					SG	DG	TG	DG LE	
Frost	0	69	31	0	77	23	100	0.33	6	6	0.31	0.34	0.34	0.34	0.08
Haze	0	49	51	0	55	45	100	0.53	6	6	0.43	0.44	0.39	0.41	0.13
Stone	0	74	26	0	86	14	100	0.29	6	6	0.28	0.32	0.32	0.33	0.29
Storm	0	27	73	0	30	70	100	0.74	6	6	0.55	0.55	0.46	0.48	0.19

T: % Transmittance
R: % Reflectance
A: % Absorption

UV Block: the % of UV light blocked by the fabric
SC: Shading Co-efficient
CF: Colour Fastness

Dim out:
1 = High light penetration
4 = Low light penetration
5 = Blackout

G Value: amount of heat transmitted through the glazing
SG: Single Glazed

DG: Double Glazed
TG: Triple Glazed
DG LE: Double Glazed Low Emissivity.

GTOT: The amount of heat transmitted through the combination of glass and solar shading.

SOLAR GAIN

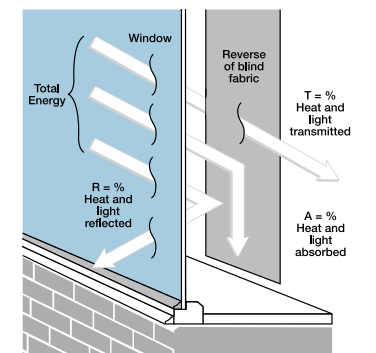
The amount of heat increase resulting from solar energy entering a room. It is the total of three separate parts - the amount of energy transmitted directly into the room, the energy which is absorbed by the blind and the proportion of energy which is absorbed by the window.

SHADING CO-EFFICIENT

The solar heat gain with the blind at the window divided by the solar heat gain with no blind at the window. The lower the shading co-efficient, therefore, the higher the efficiency of the fabric. The test results in the table above have been achieved using a single 6mm glass glazing system.

GTOT

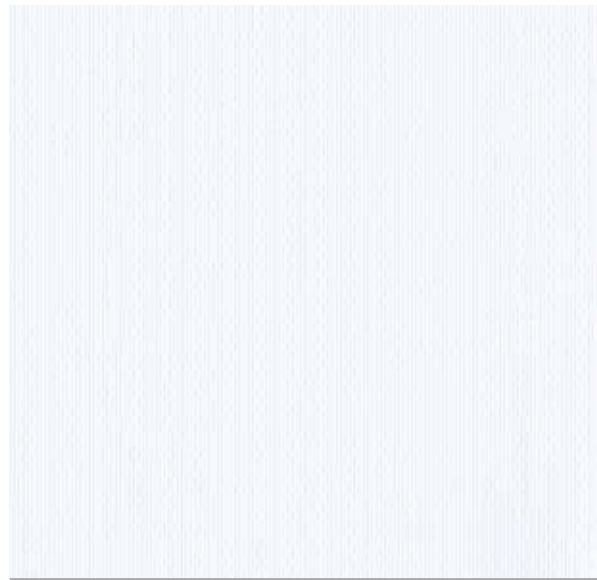
When the G-value (a measure of total solar energy that passes through the glazing system and the blind fabric) of the glazing is combined with the value of the shading.



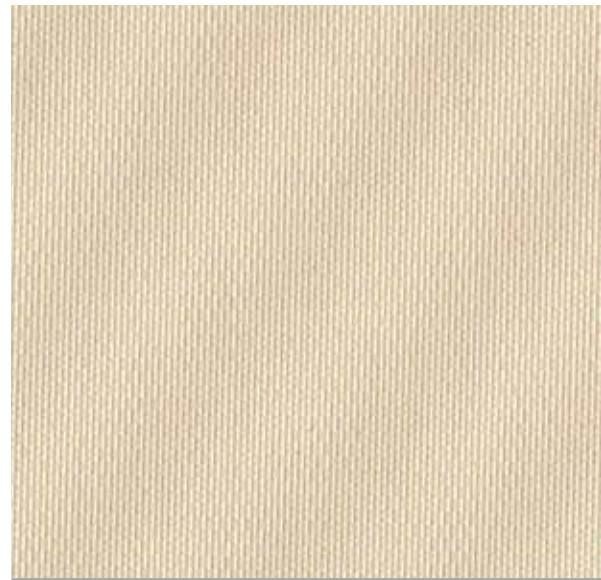
Your Louvolite® Performance Fabrics Distributor:



CI/SfB 1976 reference by SfB Agency		
(76.7)	X	



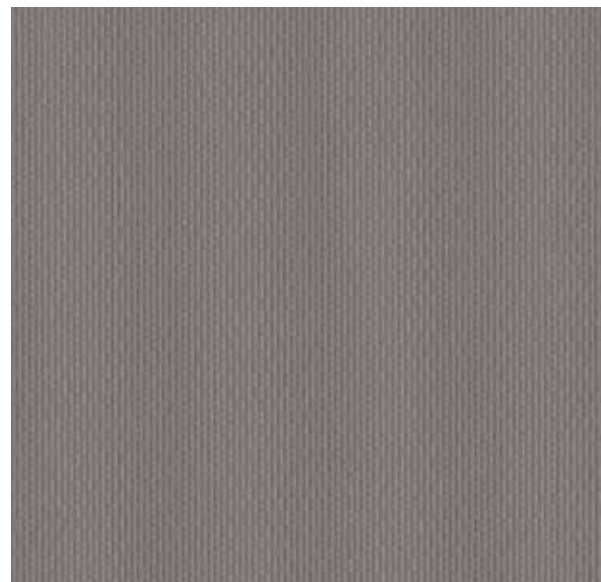
Frost



Stone



Haze



Storm

EX-LITE®+

Fabric Composition

72% pvc 28% glass fibre

Fabric Width

2.5m (98")

Fabric Weight

450g/m² (13.3oz/yd²)

Flammability Standards

Ex-lite®+ meets FR standard BS 5867 Part 2 Type B. Further information is available on request.

Colour Fastness

Tested in accordance with BS EN ISO 105-B01:1999

Cleaning

Ex-lite®+ fabrics can be wiped clean. See manufacturers instructions. Tested in accordance with BS EN 26330:1994 method 7a.

Ultra-Fresh™*

A fabric treated with Ultra-Fresh* protects against the growth of odour causing bacteria and fungi, preserving fabric freshness.

*Ultra-fresh is a registered trademark of Thomson Research Associates, Canada.

Antimicrobial

Contains antibacterial and antifungal properties to preserve fabric freshness.

Properties

