



SCREEN

WIDE WIDTH

## OSLO

ROLLER, ROMAN, VERTICAL AND PANEL BLINDS

A flame retardant and light filtering tonal weave available in 6 colourways.

Oslo is a wide width fabric.

Composition: 100% Polyester

Fabric Width: 3m (118")

Louvre Width: 89mm (3½") or 127mm (5")

Weight: 260g/m<sup>2</sup> (7.7oz/yd<sup>2</sup>)

Openess Factor: 3%

 LOUVOLITE

## OSLO

SOLAR, OPTICAL AND COLOUR FASTNESS PROPERTIES

	SOLAR			OPTICAL			UV block	SC	CF	DIM out	G VALUE				G TOT
	T <sub>s</sub>	R <sub>s</sub>	A <sub>s</sub>	T <sub>o</sub>	R <sub>o</sub>	A <sub>o</sub>					SG	DG	TG	DG LE	
Birch	20	34	46	17	31	52	100	0.67	6+	2	0.54	0.53	0.44	0.46	0.32
Graphite	4	15	81	3	13	84	100	0.86	6+	3	0.63	0.61	0.49	0.52	0.25
Hazel	12	24	64	8	20	72	100	0.77	6+	3	0.59	0.57	0.47	0.49	0.29
Jasper	3	13	84	2	12	86	100	0.87	6+	3	0.64	0.62	0.50	0.53	0.24
Maple	22	36	42	18	33	49	100	0.65	6+	2	0.53	0.52	0.44	0.46	0.33
Silver	27	39	34	23	36	41	84	0.62	6+	2	0.52	0.51	0.43	0.45	0.35

T: % Transmittance  
R: % Reflectance  
A: % Absorption

UV Block: the % of UV light blocked by the fabric  
SC: Shading Co-efficient  
CF: Colour Fastness

Dim out:  
1 = High light penetration  
4 = Low light penetration  
5 = Blackout

G Value: amount of heat transmitted through the glazing  
SG: Single Glazed

DG: Double Glazed  
TG: Triple Glazed  
DG LE: Double Glazed Low Emissivity.

GTOT: The amount of heat transmitted through the combination of glass and solar shading.

### SOLAR GAIN

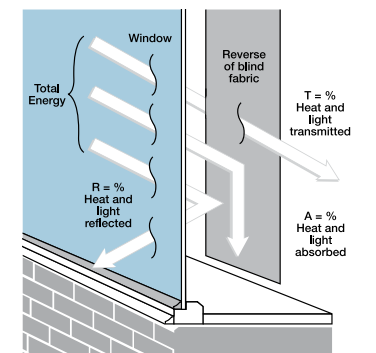
The amount of heat increase resulting from solar energy entering a room. It is the total of three separate parts - the amount of energy transmitted directly into the room, the energy which is absorbed by the blind and the proportion of energy which is absorbed by the window.

### SHADING CO-EFFICIENT

The solar heat gain with the blind at the window divided by the solar heat gain with no blind at the window. The lower the shading co-efficient, therefore, the higher the efficiency of the fabric. The test results in the table above have been achieved using a single 6mm glass glazing system.

### GTOT

When the G-value (a measure of total solar energy that passes through the glazing system and the blind fabric) of the glazing is combined with the value of the shading.



Your Louvolite® Performance Fabrics Distributor:



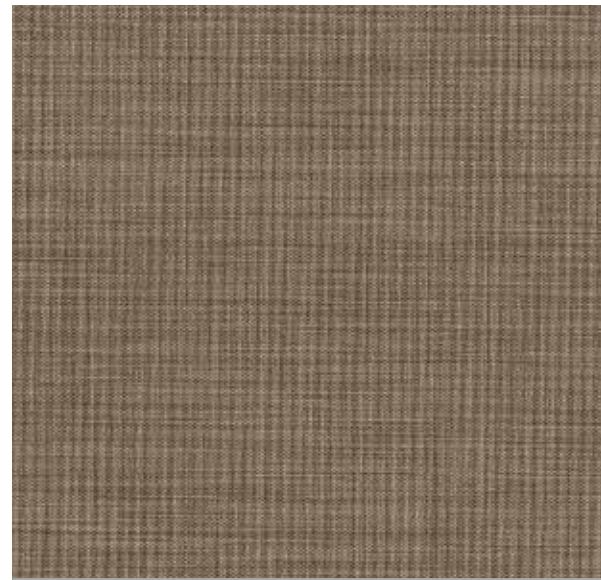
CI/SfB 1976 reference by SfB Agency

(76.7) X





Maple



Birch



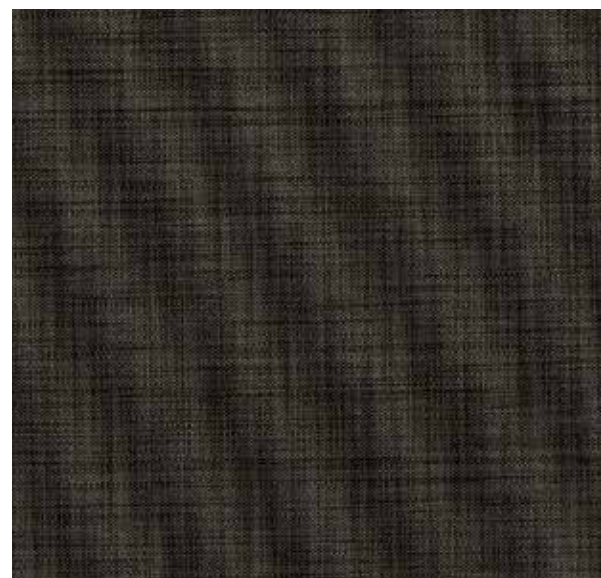
Jasper



Silver



Hazel



Graphite

# OSLO

## Fabric Composition

100% polyester

## Openness

3%

Openness factors are for guidance only. For comprehensive performance data please see Louvolite for solar and optical figures.

## Fabric Width

2.00m (78")

## Vertical Louvre Width

89mm (3½") or 127mm (5")

Other widths available on request

## Fabric Weight

125g/m<sup>2</sup> (3.7oz/yd<sup>2</sup>)

## Flammability Standards

Oslo meets FR standard BS 5867 Part 2 Type B. Further information is available on request.

## Colour Fastness

Tested in accordance with BS EN ISO 105-B01:1999

## Cleaning

Oslo fabrics can be wiped clean. See manufacturers instructions. Tested in accordance with BS EN 26330:1994 method 7a.

## Properties

