



SCREEN

WIDE WIDTH

PERSPECTIVE

ROLLER, ROMAN AND PANEL BLINDS

A finely woven, flame retardant screen fabric available in 6 colourways.

Perspective is a wide width fabric.

Composition: 78% PVC 22% Polyester

Fabric Width: 3m (118")

Weight: 460g/m² (13.6oz/yd²)

Openess Factor: 3%

 LOUVOLITE

PERSPECTIVE

SOLAR, OPTICAL AND COLOUR FASTNESS PROPERTIES

	SOLAR			OPTICAL			UV block	SC	CF	DIM out	G VALUE				G TOT
	T _s	R _s	A _s	T _o	R _o	A _o					SG	DG	TG	DG LE	
Artic White	21	69	10	17	82	1	94	0.33	6	3	0.34	0.36	0.34	0.35	0.24
Black Iron	4	8	88	4	9	87	95	0.92	6	3	0.67	0.65	0.51	0.54	0.28
Desert Sand	20	60	20	15	68	17	95	0.42	6	3	0.39	0.40	0.37	0.38	0.25
Shale Grey	13	44	43	9	51	40	95	0.57	6	3	0.47	0.47	0.41	0.43	0.28
Tuscan Beige	21	62	17	17	73	10	95	0.40	6	3	0.38	0.38	0.36	0.37	0.25
Windspray Grey	18	53	29	14	60	26	94	0.49	6	3	0.43	0.43	0.39	0.40	0.25

T: % Transmittance
R: % Reflectance
A: % Absorption

UV Block: the % of UV light blocked by the fabric
SC: Shading Co-efficient
CF: Colour Fastness

Dim out:
1 = High light penetration
4 = Low light penetration
5 = Blackout

G Value: amount of heat transmitted through the glazing
SG: Single Glazed

DG: Double Glazed
TG: Triple Glazed
DG LE: Double Glazed Low Emissivity.

GTOT: The amount of heat transmitted through the combination of glass and solar shading.

SOLAR GAIN

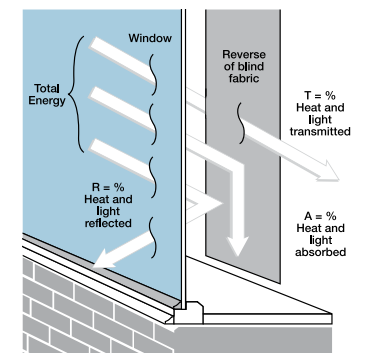
The amount of heat increase resulting from solar energy entering a room. It is the total of three separate parts - the amount of energy transmitted directly into the room, the energy which is absorbed by the blind and the proportion of energy which is absorbed by the window.

SHADING CO-EFFICIENT

The solar heat gain with the blind at the window divided by the solar heat gain with no blind at the window. The lower the shading co-efficient, therefore, the higher the efficiency of the fabric. The test results in the table above have been achieved using a single 6mm glass glazing system.

GTOT

When the G-value (a measure of total solar energy that passes through the glazing system and the blind fabric) of the glazing is combined with the value of the shading.



Your Louvolite® Performance Fabrics Distributor:



Manufactured in the UK

CI/SfB 1976 reference by SfB Agency

(76.7) X

PERSPECTIVE

Fabric Composition

78% PVC 22% polyester

Fabric Width

3.00m (118")

Openness

3%

Openness factors are for guidance only. For comprehensive performance data please see Louvolite for solar and optical figures.

Fabric Weight

460g/m² (13.6oz/yd²)

Flammability Standards

Perspective meets FR standard BS 5867 Part 2 Type B. Further information is available on request.

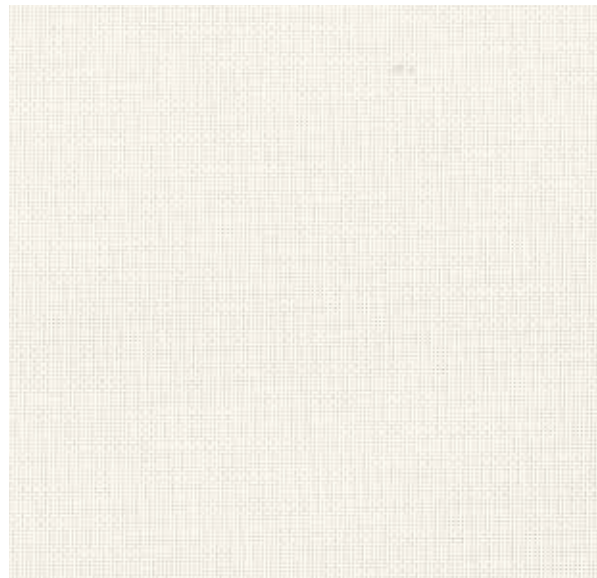
Colour Fastness

Tested in accordance with BS EN ISO 105-B01:1999

Cleaning

Perspective fabrics can be wiped clean. See manufacturers instructions. Tested in accordance with BS EN 26330:1994 method 7a.

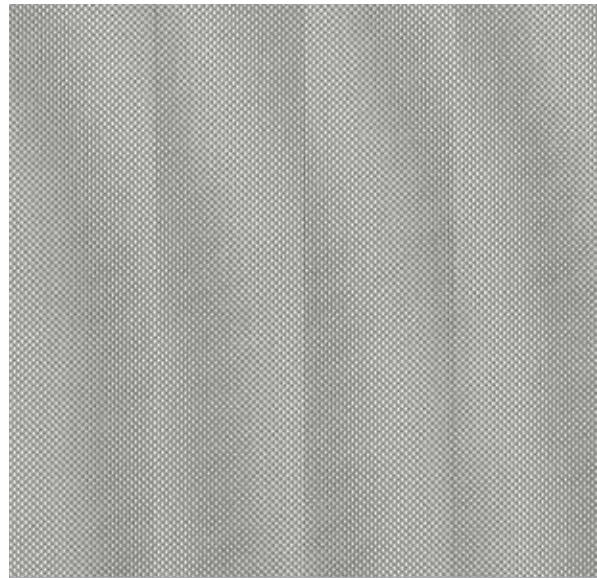
Properties



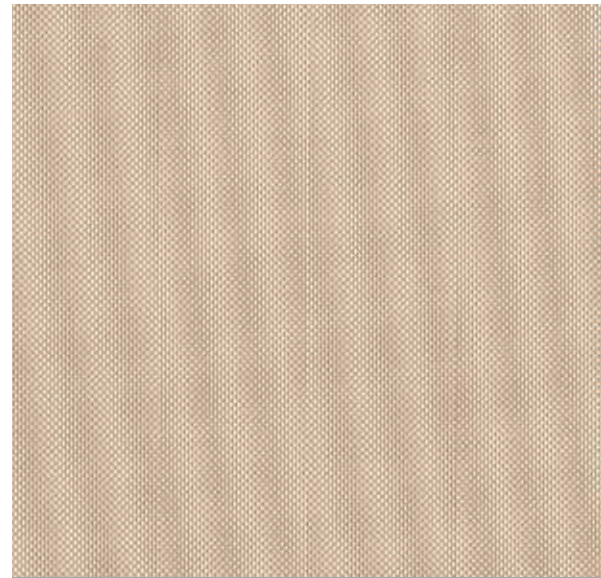
Arctic White



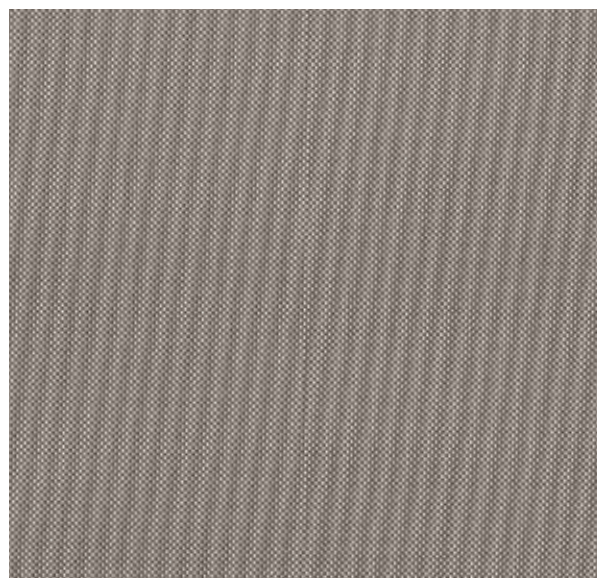
Tuscan Beige



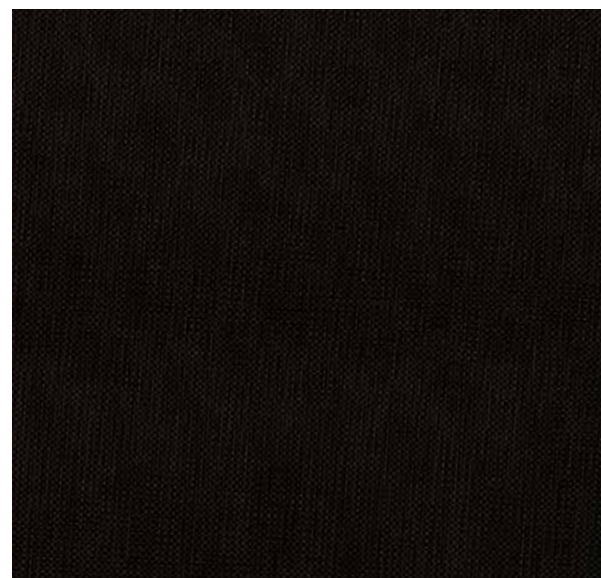
Windspray Grey



Desert Sand



Shale Grey



Black Iron

