



DIM OUT SPC

## REGENCY SPC®

ROLLER, VERTICAL, PANEL AND PLEATED BLINDS

A woven, flame retardant fabric with a vertical stripe in 4 neutral colours. Regency SPC® has a solar protective coating which helps reduce glare entering a room. Regency SPC® features SPC®, Pollergen™ and Greenshield.

Composition: 100% Polyester

Fabric Width: 2.00m (78")

Louvre Width: 89mm (3½") or 127mm (5")

Weight: 191g/m² (5.6oz/yd²)



**LOUVOLITE**

## REGENCY SPC®

SOLAR, OPTICAL AND COLOUR FASTNESS PROPERTIES

	SOLAR			OPTICAL			UV block	SC	CF	DIM out	G VALUE				G TOT
	T <sub>s</sub>	R <sub>s</sub>	A <sub>s</sub>	T <sub>o</sub>	R <sub>o</sub>	A <sub>o</sub>					SG	DG	TG	DG LE	
Chrome	18	70	12	10	73	17	100	0.32	6+	3	0.33	0.35	0.34	0.34	0.22
Cream	22	70	8	19	76	5	100	0.32	6+	2	0.33	0.35	0.34	0.35	0.24
Oyster	20	70	10	16	75	9	100	0.32	6+	2	0.33	0.35	0.34	0.34	0.23
White	22	69	9	20	75	5	100	0.33	6+	2	0.34	0.36	0.34	0.35	0.24

T: % Transmittance  
R: % Reflectance  
A: % Absorption

UV Block: the % of UV light blocked by the fabric  
SC: Shading Co-efficient  
CF: Colour Fastness

Dim out:  
1 = High light penetration  
4 = Low light penetration  
5 = Blackout

G Value: amount of heat transmitted through the glazing  
SG: Single Glazed

DG: Double Glazed  
TG: Triple Glazed  
DG LE: Double Glazed Low Emissivity.

GTOT: The amount of heat transmitted through the combination of glass and solar shading.

### SOLAR GAIN

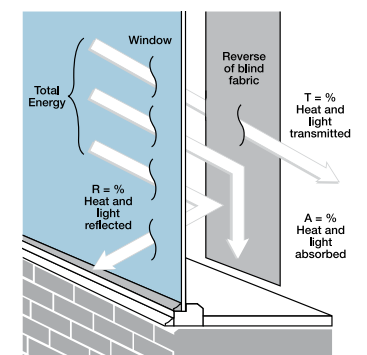
The amount of heat increase resulting from solar energy entering a room. It is the total of three separate parts - the amount of energy transmitted directly into the room, the energy which is absorbed by the blind and the proportion of energy which is absorbed by the window.

### SHADING CO-EFFICIENT

The solar heat gain with the blind at the window divided by the solar heat gain with no blind at the window. The lower the shading co-efficient, therefore, the higher the efficiency of the fabric. The test results in the table above have been achieved using a single 6mm glass glazing system.

### GTOT

When the G-value (a measure of total solar energy that passes through the glazing system and the blind fabric) of the glazing is combined with the value of the shading.



Your Louvolite® Performance Fabrics Distributor:



CI/SfB 1976 reference by SfB Agency		
(76.7)	X	

# REGENCY SPC®

## Fabric Composition

100% polyester

## Fabric Width

2.00m (78")

## Vertical Louvre Width

89mm (3½") or 127mm (5")  
Other widths available on request

## Fabric Weight

191g/m<sup>2</sup> (5.6oz/yd<sup>2</sup>)

## Flammability Standards

Regency SPC® meets FR standard BS 5867 Part 2 Type B. Further information is available on request.

## Colour Fastness

Tested in accordance with BS EN ISO 105-B01:1999

## Cleaning

Regency SPC® vertical fabrics are machine washable, other Regency SPC® fabrics can be wiped clean. See manufacturers instructions. Tested in accordance with BS EN 26330:1994 method 7a.

## SPC®

A Solar Protective Coating applied to the reverse of the fabric that reduces glare, reflects and filters light more effectively than conventional fabrics.

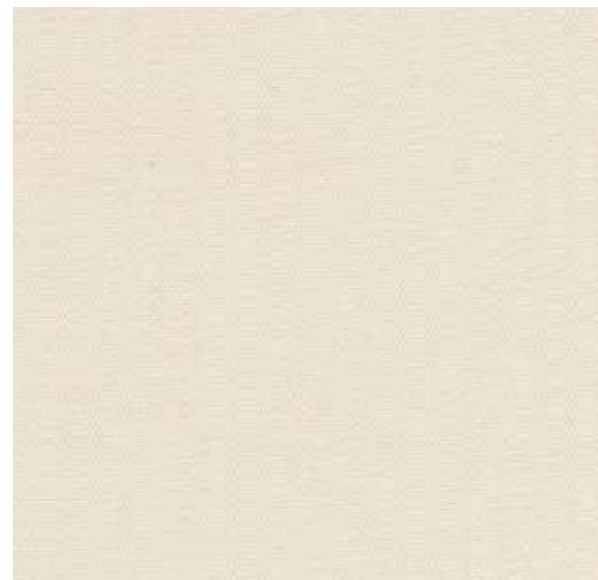
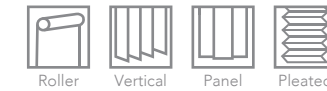
## Pollergen™

Fabrics treated with Pollergen™ help relieve hayfever symptoms. On contact, Pollergen™ treated blinds denature up to 50% of grass pollen entering a room. A deployed blind is the most effective.

## Greenshield

Fabrics featuring Greenshield have been tested to confirm no harmful VOC's or hazardous substances will be released into the environment in quantities that are recognised as potentially dangerous to occupants of dwellings or buildings.

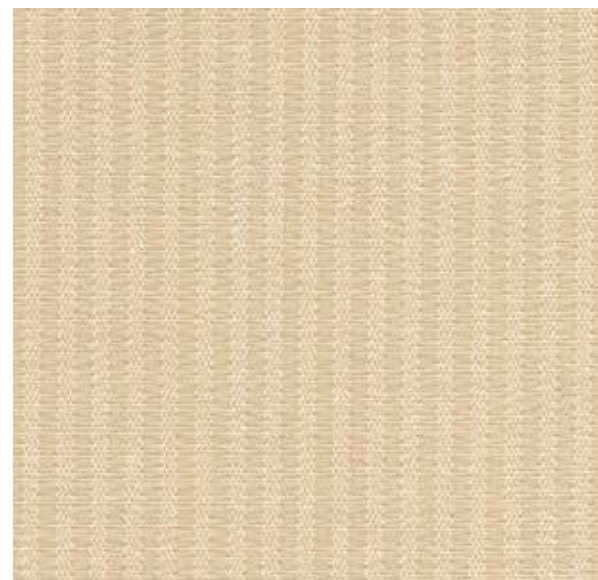
## Properties



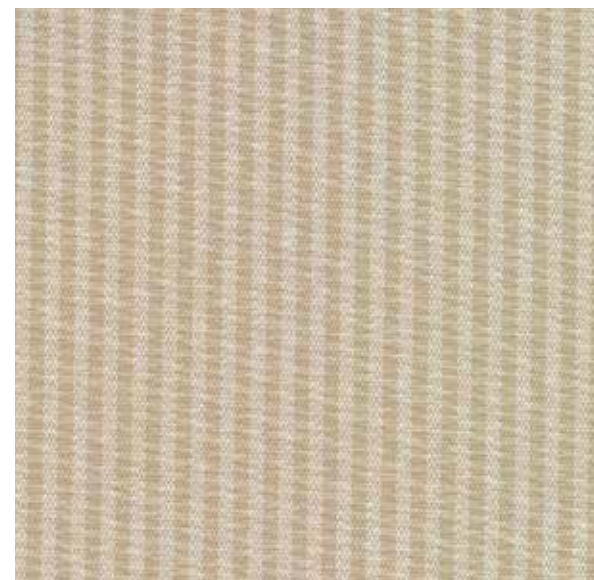
White



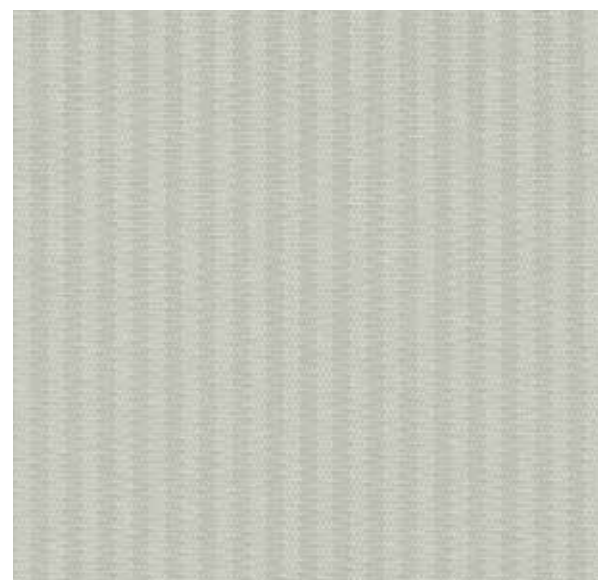
Cream



Oyster



Taupe



Chrome

