



BLACKOUT

## ROMANY

ROLLER AND VERTICAL BLINDS

A robust, flame retardant fabric in 4 colours. Romany is a blackout fabric with a metallic brush stroke detail that is wipeable and moisture resistant.

Composition: 72% PVC and 28% glass fibre

Fabric width: 1.75m (69")

Louvre Width: 89mm (3½") or 127mm (5")

Weight: 460g/m<sup>2</sup> (13.6oz/yd<sup>2</sup>)



**LOUVOLITE**

## ROMANY

SOLAR, OPTICAL AND COLOUR FASTNESS PROPERTIES

	SOLAR			OPTICAL			UV block	SC	CF	DIM out	G VALUE				G TOT
	T <sub>s</sub>	R <sub>s</sub>	A <sub>s</sub>	T <sub>o</sub>	R <sub>o</sub>	A <sub>o</sub>					SG	DG	TG	DG LE	
Cream	0	61	39	0	68	32	100	0.41	6	6	0.36	0.38	0.36	0.37	0.10
Light Grey	0	49	51	0	54	45	100	0.53	6	6	0.43	0.44	0.39	0.41	0.13
Putty	0	46	54	0	49	49	100	0.56	6	6	0.44	0.46	0.40	0.42	0.14
White	0	69	31	0	31	77	100	0.33	6	6	0.31	0.34	0.34	0.34	0.08

T: % Transmittance  
R: % Reflectance  
A: % Absorption

UV Block: the % of UV light blocked by the fabric  
SC: Shading Co-efficient  
CF: Colour Fastness

Dim out:  
1 = High light penetration  
4 = Low light penetration  
5 = Blackout

G Value: amount of heat transmitted through the glazing  
SG: Single Glazed

DG: Double Glazed  
TG: Triple Glazed  
DG LE: Double Glazed Low Emissivity.

GTOT: The amount of heat transmitted through the combination of glass and solar shading.

### SOLAR GAIN

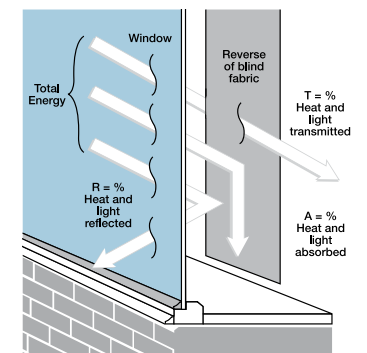
The amount of heat increase resulting from solar energy entering a room. It is the total of three separate parts - the amount of energy transmitted directly into the room, the energy which is absorbed by the blind and the proportion of energy which is absorbed by the window.

### SHADING CO-EFFICIENT

The solar heat gain with the blind at the window divided by the solar heat gain with no blind at the window. The lower the shading co-efficient, therefore, the higher the efficiency of the fabric. The test results in the table above have been achieved using a single 6mm glass glazing system.

### GTOT

When the G-value (a measure of total solar energy that passes through the glazing system and the blind fabric) of the glazing is combined with the value of the shading.

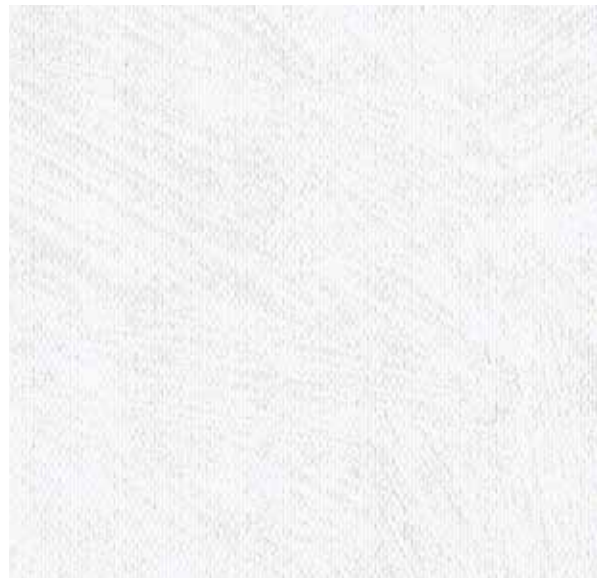


Your Louvolite® Performance Fabrics Distributor:



Manufactured in the UK

CI/SfB 1976 reference by SfB Agency		
(76.7)	X	



White



Cream



Putty



Light Grey

# ROMANY

## Fabric Composition

72% pvc 28% glass fibre

## Fabric Width

1.75m (69")

## Vertical Louvre Width

89mm (3½") or 127mm (5")  
Other widths available on request

## Fabric Weight

460g/m<sup>2</sup> (13.6oz/yd<sup>2</sup>)

## Flammability Standards

Romany meets FR standard BS 5867 Part 2 Type B.  
Further information is available on request.

## Colour Fastness

Tested in accordance with BS EN ISO 105-B01:1999

## Cleaning

Romany fabrics can be wiped clean.  
See manufacturers instructions. Tested in  
accordance with BS EN 26330:1994 method 7a.

## Properties

