



DIM OUT

VOILE

ROLLER, VERTICAL, PANEL AND PLEATED BLINDS

A translucent, flame retardant fabric in 8 colourways.

Voile features Pollergen™ and Greenshield.

Composition: 100% Polyester

Fabric Width: 2.00m (78")

Louvre Width: 89mm (3½") or 127mm (5")

Weight: 125g/m² (3.7oz/yd²)



LOUVOLITE

VOILE

SOLAR, OPTICAL AND COLOUR FASTNESS PROPERTIES

	SOLAR			OPTICAL			UV block	SC	CF	DIM out	G VALUE				G TOT
	T _s	R _s	A _s	T _o	R _o	A _o					SG	DG	TG	DG LE	
Cobalt Blue	41	20	39	26	6	68	62	0.81	5	1	0.65	0.61	0.49	0.51	0.51
Cream	62	36	2	63	37	0	55	0.65	5	1	0.59	0.55	0.44	0.46	0.63
Grape	43	28	29	29	13	58	75	0.73	5	1	0.61	0.57	0.46	0.49	0.50
Moondust	43	37	20	34	36	30	70	0.64	5	1	0.56	0.53	0.44	0.46	0.48
Papaya	46	34	20	40	27	33	70	0.67	5	1	0.58	0.55	0.44	0.47	0.51
Sage	51	39	10	49	38	13	62	0.62	5	1	0.55	0.52	0.43	0.52	0.53
Sandshell	51	29	20	49	20	31	63	0.72	5	1	0.61	0.57	0.46	0.49	0.55
White	65	35	0	65	35	0	42	0.66	6	1	0.60	0.55	0.44	0.47	0.65

T: % Transmittance
R: % Reflectance
A: % Absorption

UV Block: the % of UV light blocked by the fabric
SC: Shading Co-efficient
CF: Colour Fastness

Dim out:
1 = High light penetration
4 = Low light penetration
5 = Blackout

G Value: amount of heat transmitted through the glazing
SG: Single Glazed

DG: Double Glazed
TG: Triple Glazed
DG LE: Double Glazed Low Emissivity.

GTOT: The amount of heat transmitted through the combination of glass and solar shading.

SOLAR GAIN

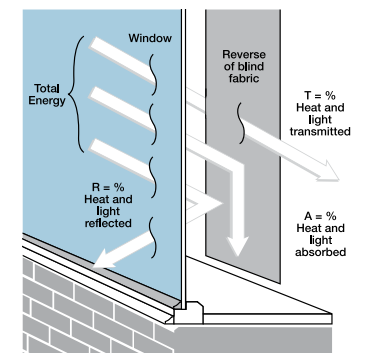
The amount of heat increase resulting from solar energy entering a room. It is the total of three separate parts - the amount of energy transmitted directly into the room, the energy which is absorbed by the blind and the proportion of energy which is absorbed by the window.

SHADING CO-EFFICIENT

The solar heat gain with the blind at the window divided by the solar heat gain with no blind at the window. The lower the shading co-efficient, therefore, the higher the efficiency of the fabric. The test results in the table above have been achieved using a single 6mm glass glazing system.

GTOT

When the G-value (a measure of total solar energy that passes through the glazing system and the blind fabric) of the glazing is combined with the value of the shading.



Your Louvolite® Performance Fabrics Distributor:



CI/SfB 1976 reference by SfB Agency

(76.7) X



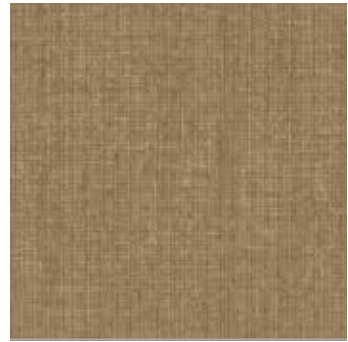
White



Cream



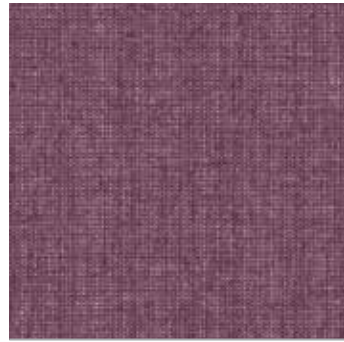
Sandshell



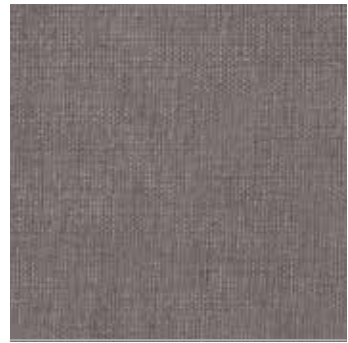
Papaya



Sage



Grape



Moondust



Cobalt Blue

VOILE

Fabric Composition

100% polyester

Fabric Width

2.00m (78")

Vertical Louvre Width

89mm (3½") or 127mm (5")
Other widths available on request

Fabric Weight

125g/m² (3.7oz/yd²)

Flammability Standards

Voile meets FR standard BS 5867 Part 2 Type B.
Further information is available on request.

Colour Fastness

Tested in accordance with BS EN ISO 105-B01:1999

Cleaning

Voile fabrics can be wiped clean. See manufacturers instructions. Tested in accordance with BS EN 26330:1994 method 7a.

Pollergen™

Fabrics treated with Pollergen™ help relieve hayfever symptoms. On contact, Pollergen™ treated blinds denature up to 50% of grass pollen entering a room. A deployed blind is the most effective.

Greenshield

Fabrics featuring Greenshield have been tested to confirm no harmful VOC's or hazardous substances will be released into the environment in quantities that are recognised as potentially dangerous to occupants of dwellings or buildings.

Properties

