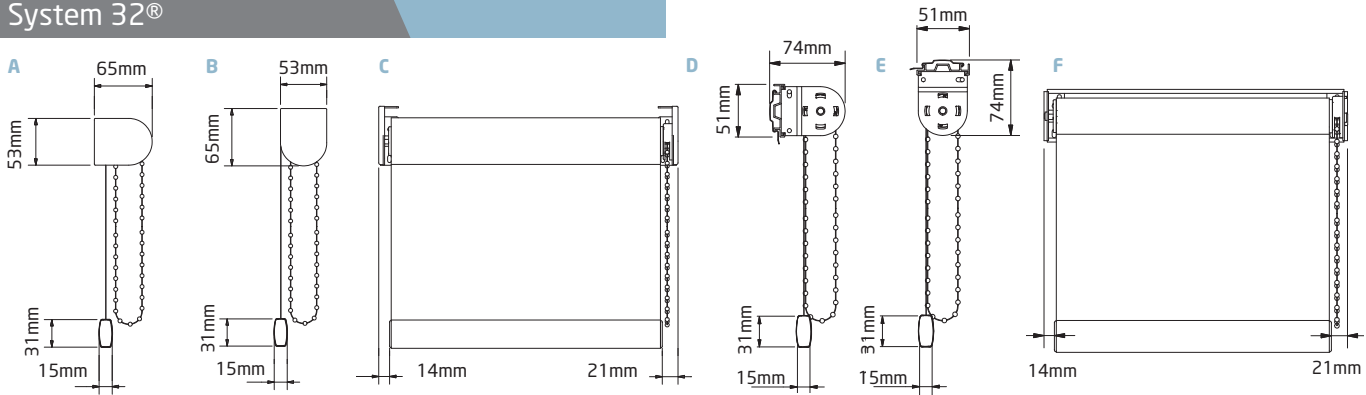


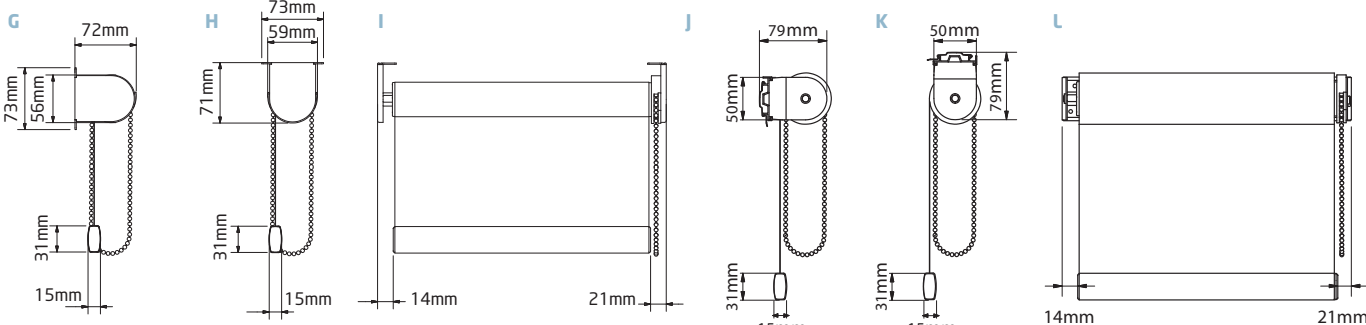
SC Series - Universal Bracket Dimensions

System 32®



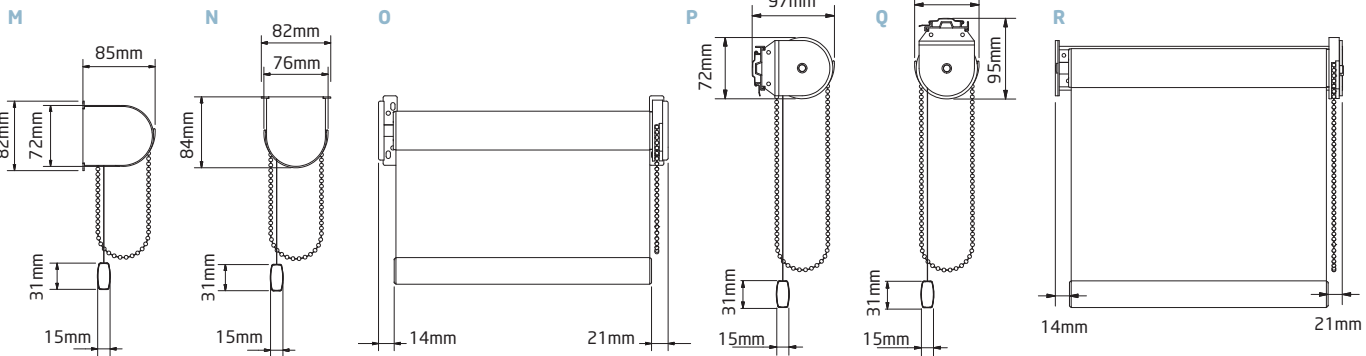
A. System 32® Standard Metal Bracket Face Fix & cover • **B.** System 32® Standard Metal Bracket Top Fix & cover • **C.** System 32® Standard Metal Bracket Top Fix Front View - same dimensions as Face Fix • **D.** System 32® Standard Metal Bracket Face Fix with Back Bar • **E.** System 32® Standard Metal Bracket Top Fix with Back Bar • **F.** System 32® Standard Metal Bracket Top Fix with Back Bar, Front View - same dimensions as Face Fix

System 40®



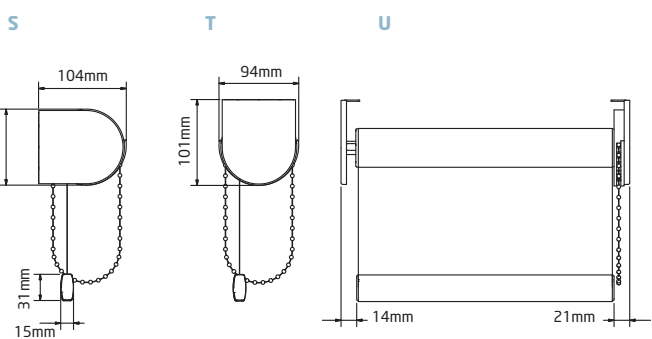
G. System 40® Standard Metal Bracket Face Fix • **H.** System 40® Standard Metal Bracket Top Fix • **I.** System 40® Standard Metal Bracket Top Fix Front View - same dimensions as Face Fix • **J.** System 40® Back Bar Face Fix • **K.** System 40® Back Bar Top Fix • **L.** System 40® Back Bar Top Fix Front View - same dimensions as Face Fix

System 45®



M. System 45® Standard Metal Bracket Face Fix • **N.** System 45® Standard Metal Bracket Top Fix • **O.** System 45® Standard Metal Bracket Top Fix Front View - same dimensions as Face Fix • **P.** System 45® Standard Metal Bracket Face Fix with Back Bar • **Q.** System 45® Standard Metal Bracket Top Fix with Back Bar • **R.** System 45® Standard Metal Bracket Top Fix with Back Bar, Front View - same dimensions as Face Fix

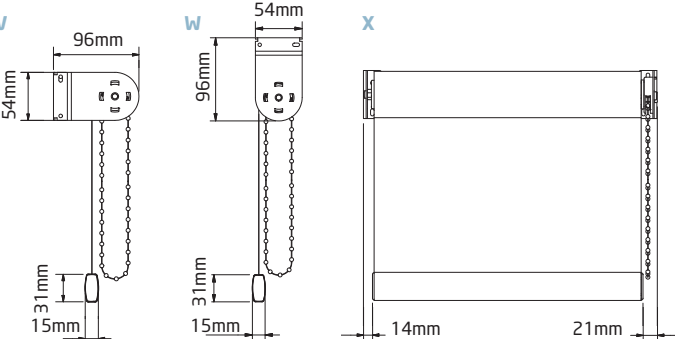
System 45+



S. System 45+ Standard Metal Bracket Face Fix • **T.** System 45+ Standard Metal Bracket Top Fix • **U.** System 45+ Standard Metal Bracket Top Fix Front View - same dimensions as Face Fix

EXTENDED METAL BRACKET

shown System 32®



V. System 32® Extended Metal Bracket Face Fix • **W.** System 32® Extended Metal Bracket Top Fix • **X.** System 32® Extended Metal Bracket Top Fix Front View - same dimensions as Face Fix

Louvolute side control chain operated roller blind systems



The Louvolute SC Series™ roller shade systems are designed to provide effective and efficient control of light, heat and glare in large and small scale commercial and domestic installations.

The mechanisms are designed for longevity with components manufactured using prime grade engineering thermoplastics in combination with aluminium, steel and stainless steel parts.

To satisfy most window types and the variety of window blind fabrics available, the Louvolute SC Series™ comes in a choice of models. Units feature higher drive ratios and spring assisted operation to reduce the pull force on large or heavy blinds. A selection of aluminium roller tubes have been designed specifically to integrate with the SC Series™ operating systems for optimal performance and minimal deflection.

The SC Series™ uses no sew, no glue technology, with the fabric being formed into the tube and bottom bar for extra reliability, durability and consistency.

Manually operated systems use a metal or plastic ball chain for operation. This is available in a variety of colours and finishes.

The Louvolute SC Series™ can be motorised and also used in combination with other shading products or in conjunction with heating/ventilation systems operated via computer controlled building management programmes.

The Louvolute SC Series™ offers a multiple shade option with either individual or a single common manual or motorised drive. This allows shading of exceptionally large glass areas.

Roller Blind System - Multiple blind options



Duo link operation

The SC Series™ Duo Link operating system allows two blinds to have fully independent operation whilst sharing a common centre support bracket. Such a combination can prove of use when covering a large glass area and with the need to negate tube deflection, whilst minimising spacing between blinds. In addition, such installations offer the opportunity of covering two openings of different drops with a shared intermediate bracket.

Multi link operation

The SC Series™ Multi Link operating system allows multiple blinds to be joined together with a shared single control mechanism. This facilitates one action being required to raise or lower the blinds simultaneously. The capacity of the lifting mechanism is dependent upon the performance rating of the operating unit.

The multi link mechanism also allows multiple blinds to be driven by a simple powered drive.

Power drive options

The Louvolute SC Series™ operating system can be used in conjunction with Somfy Power Drive systems either as individual blinds or as part of a building management control system. Please discuss these options with your preferred supplier of Louvolute SC Series™ roller blind operating systems.



Power Drive options

Your Side Control Distributor:



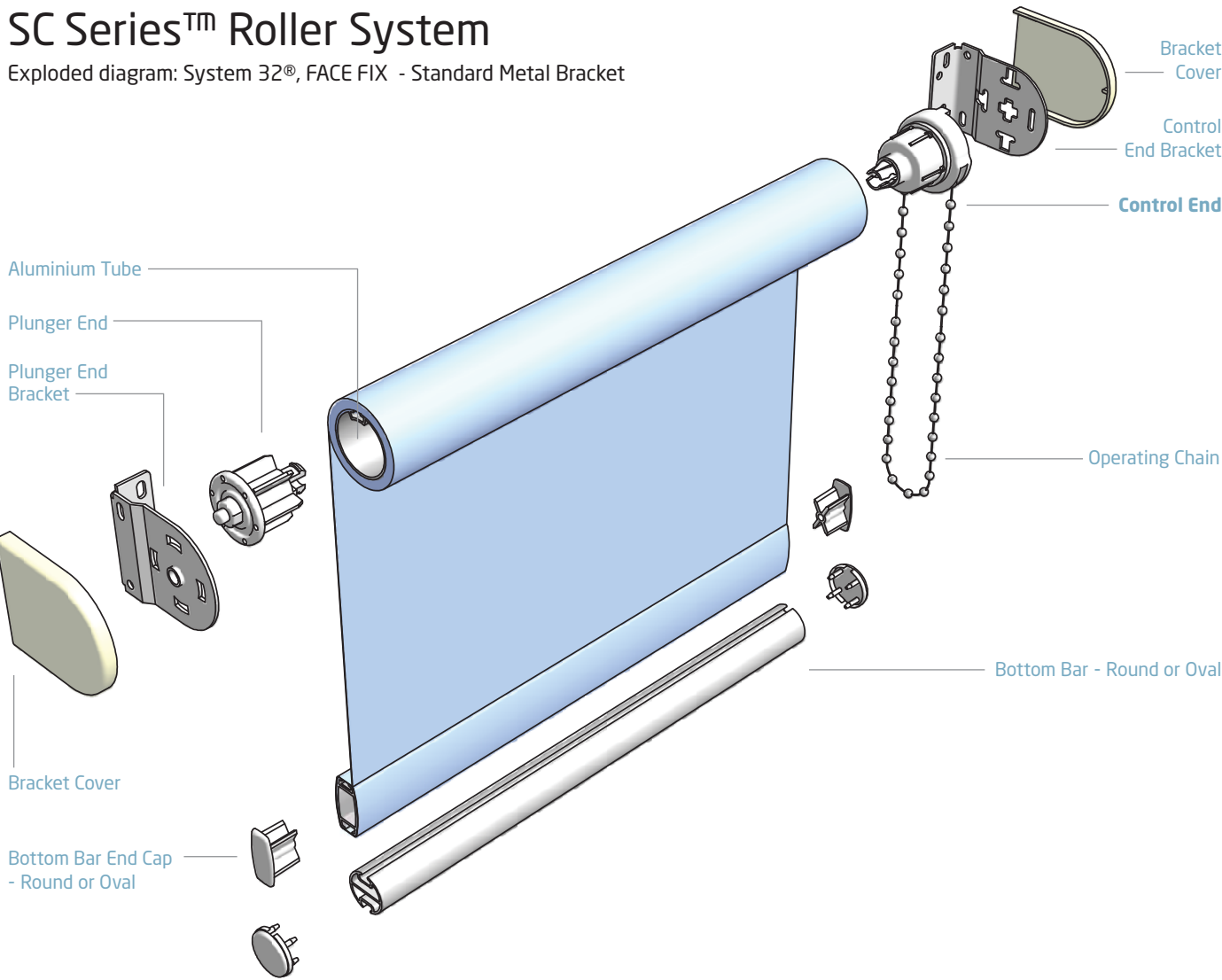
ARCHITECTS
SPECIFIERS
CONTRACTORS

SC series™
Roller System

CI/SIB 1976 reference by SIB Agency			
	(76.7)	X	

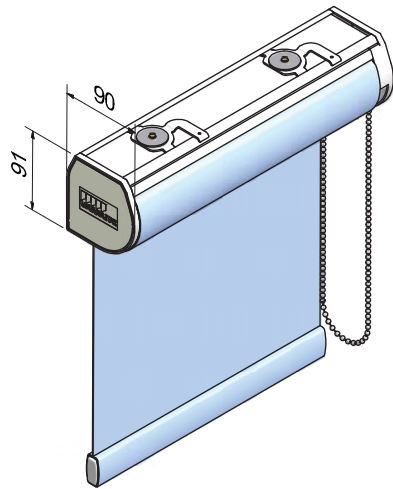
SC Series™ Roller System

Exploded diagram: System 32®, FACE FIX - Standard Metal Bracket



Additional options

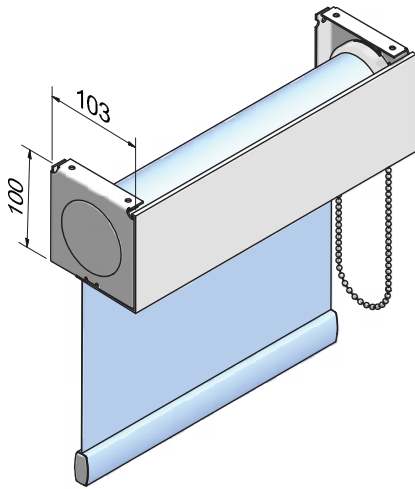
Cassette system



Cassette

All component parts and fabric are enclosed within a rounded fascia resulting in a compact, robust system with a streamlined appearance. Fast, multiple installations can be achieved using brackets that can be fitted along the whole length of the cassette. The snap fix fascia can be plain white or matching fabric profile. Available for System 32, 40 and 45.

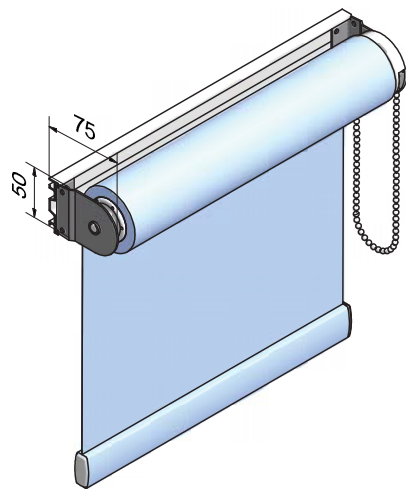
Fascia system



Fascia

With brackets manufactured from heavy gauge stove enamelled steel and fascia from aluminium, these units serve to house the roller shade and operating system. The use of cassette or fascia systems can allow window blinds to integrate more easily into particular glazing installations or to effect the desired aesthetic impact.

Back bar mounting plate/brackets



Back Bar Mounting Plate/ brackets

Stove enamelled finish to galvanised steel. The mounting brackets are designed to allow top or face fix installations. The bracket design enables quick and simple installation whilst minimising the light gap between the blind and any recess.

Brackets sizes are appropriate to each system and tube size - extension brackets are available if required. Brackets are colour keyed to operating system colour .

Covers for the mounting brackets are available to suit each size.

Spring Assist Units

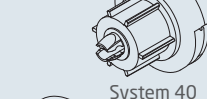
The SC Series™ Spring Assist units enable large, heavy blinds to be operated more easily reducing the effort required by the operator. The springs fit neatly into the operating system and are totally hidden from view. Available for System 45®.

Side Control Components

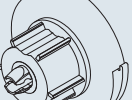
Control End - System 32, 32+, 40, 45 & 45+



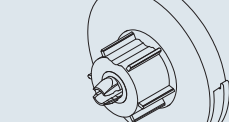
System 32



System 40



System 45



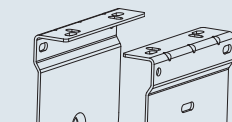
System 45+

Patented universal side control operating unit featuring stainless steel/bezinal wrap spring clutch mechanism. The control end unit features a locking feature to secure the unit into the bracket. The operating unit comes in a variety of sizes, 32/32+/40/45 45+, for ease of operation even on large heavy shades. Available in a variety of colours.

Product specification

Sprocket / sprocket guard acetal
Other parts glass filled nylon 6
Spring lock friction system
Unique bracket securing pin
Choice of nylon or metal chain drive
Colour: white, cream, brown or black

Brackets (metal) and Bracket Covers



Mounting Brackets

Stove enamelled finish to galvanised steel. The mounting brackets are designed to allow top, face or side fix installations. The bracket design enables quick and simple installation whilst minimising the light gap between the blind and any recess.

The brackets sizes are appropriate to each system and tube size - extension brackets are available if required. Brackets are colour keyed to operating system colour. Covers for the mounting brackets are available to suit each size.

Product specification

Universal fixing points: side, face or top fix
Mild steel, zinc plated and powder coated
Thickness: 1.5 mm
20mm wide fixing plate
Colour: white, cream, brown or black

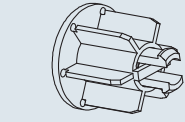
Bracket covers

Available to suit each size of bracket

Product specification

Glass filled nylon
Colour: white

Plunger End - System 32, 32+, 40, 45 & 45+



Plunger end System

A sprung loaded plunger end allows for quick and easy installation by a single individual, even on larger blinds.

Product specification

Nylon 6
Colour: white, cream, brown or black

Back Bar Mounting Plate

End view



The back bar mounting plate is available for use with any SC System™ operating system and allows for ease of installation at sites where conventional installation options might be difficult.

Product specification

100% aluminium
Colour: white

Standard Tube - System 32, 32+, 40, 45 & 45+



Side view

End views

System 32®

System 40®

System 45®

Tempered aluminium tube is used to Louvolite patented designs ensuring a high degree of torsional strength. The design allows for full integration of the selected fabric and also provides maximum resistance to tube deflection.

Different tube sizes are available, each being designed to work in conjunction with the appropriate SC operating system

Product specification

100% aluminium
Lengths: 5m (5.5 yard) maximum

System 32 & 32+: Outside diameter: 32mm (1 ¼"), wall thickness: 1.05mm (1/32"), fabric locating slot: 1, strengthening fin: 4mm (5/32")

System 40: Outside diameter: 40mm (1 18/32"), wall thickness: 1.25mm (5/64"), fabric locating slot: 2, strengthening fins: 4mm (5/32") & 4.5mm (11/64")

System 45 & 45+: Outside diameter: 45mm (1 23/32"), wall thickness: 1.25mm (5/64"), fabric locating slot: 3, strengthening fins: 4mm (5/32"), 4.5mm (11/64") & 5mm (13/64")

Heavy Duty Tube - System 45 & 45+



Side view

End view

Product specification

100% aluminium
Lengths: 5m (5.5 yard)

System 45 & 45+: Outside diameter: 45mm (1 23/32"), Wall thickness: 1.75mm (1/16"), Fabric locating slot: 3, Strengthening fins: 4.5mm (11/64"), 5mm (13/64") & HD 5mm (13/64") pocket

Chain



Available in nickel plated brass, stainless steel or plastic. The pitch of the operating chain is designed to provide a smooth and silent operation. Available in a variety of colours, each chain system has a variety of connector units to allow for child safe operation where required.

Product specification

Acetal ball - colour: white or brown
Zinc plated - colour: silver or gold
Stainless steel
Easy break chain connector for child safety

Bottom Bar



Oval

Circular

Oval and round rails are available in aluminium in both anodised or white finish. The oval range is also available in UPVC with white, beige or clear finish .

The design of the rails allows for concealed and secure location of the selected fabric. Wooden bottom rails can be fixed to the fabric for decorative or co-ordinating effect.

Product specification

Lengths: 5m (5.5 yard)
Overall dimensions oval: 15x30 mm
Outside diameter round: 23mm
Wall thickness - oval: 1.2 mm, round: 1.25mm

Bottom Bar End Caps (oval or circular)



Oval

Circular

Co-ordinating end caps apply the appropriate finish to the bottom rail assembly.

Product specification

Oval: nylon / polypropylene
Colour: white, beige or clear

Circular: nylon

Colour: white or grey

Maximum Recommended Blind Sizes

N.B. Double the size when using an intermediate bracet

		Blind Width (metres)							
System	Fabric Group	0.50	1.00	1.50	2.00	2.50	3.00	3.50	
System 32®	up to 200 g/m sq	4.00	4.00	4.00	3.00				
	200 > 320 g/m sq	3.00	3.00	2.80	1.85				
	320 > 485 g/m sq	4.00	3.00	1.80	1.25				
System 32+®	up to 200 g/m sq	4.00	4.00	4.00	4.00				
	200 > 320 g/m sq	3.00	3.00	3.00	3.00				
	320 > 485 g/m sq	4.00	4.00	3.10	2.15				
System 40®	up to 200 g/m sq	5.00	5.00	5.00	5.00	5.00			
	200 > 320 g/m sq	3.75	3.75	3.75	3.75	3.75			
	320 > 485 g/m sq	5.00	5.00	5.00	3.55	2.70			
System 45®	up to 200 g/m sq	6.00	6.00	6.00	6.00	6.00	4.50		
	200 > 320 g/m sq	4.75	4.75	4.75	4.75	4.75	2.80		
	320 > 485 g/m sq	6.00	6.00	6.00	5.00	4.00	1.85		
System 45+®	up to 200 g/m sq	6.00	6.00	6.00	6.00	6.00	6.00	6.00	
	200 > 320 g/m sq	4.75	4.75	4.75	4.75	4.75	4.75	4.00	
	320 > 485 g/m sq	6.00	6.00	6.00	5.00	4.00	3.25	2.70	

Hardware Specification

When specifying hardware requirements please refer to the statement following to avoid receiving blinds not manufactured using genuine Louvolite operating systems.

Roller Blinds should be manufactured using only genuine Louvolite SC Series™ utilising aluminium tube of 32mm (1 ¼") 40mm (1 5/8") or 45 mm (1 3/4") diameter.

The operating units will feature a patented chain drive unit incorporating a locking device and a spring loaded plunge end location assist.

Brackets will be of universal fixing type colour keyed to the operating systems and the bottom rail will be manufactured from aluminium or extruded UPVC.

The fixing method of the fabric to the hardware will not require gluing, stapling or sewing but will feature a fabric locking system to ensure full integrity of the system.

A full advisory service is offered should you require further clarification or a demonstration of the Louvolite SC chain operated control systems. Please consult an accredited Louvolite manufacturer.

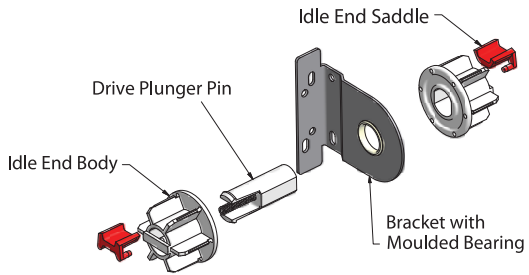
Multi Link Operating Size Matrix

Specification for drive link multiple blind operation

The Louvolite Multi Link system opens up the opportunity to cover a large expanse of glazed area, utilising a single drive chain. The unique connection drive between the blinds means that the visible light gap is kept to a minimum for maximum coverage. The table below gives an indication of the total blind size achievable when using the Louvolite SC Series™ System 40® and 45 multi link units.

Key: Fabric weights up to 200 g/m sq 200 > 320 g/m sq 320 > 485 g/m sq

	ROLLER BLIND SYSTEM 40® DRIVE LINK MATRIX									ROLLER BLIND SYSTEM 45® DRIVE LINK MATRIX								
Blind sizes (metres/inches)	over 2.5m use 2 blinds				over 5m use 3 blinds					over 3m use 2 blinds					over 6m use 3 blinds			
	2.5m (98.4")	3.0m (118.1")	3.5m (137.8")	4.0m (157.5")	5.0m/ 196.9"	5.5m/ 216.5"	6.0m/ 236.2"	6.5m/ 255.9"	7.0m/ 275.6"	<3.5m/ 137.8"	4.0m/ 157.5"	4.5m/ 177.2"	5.0m/ 196.9"	5.5m/ 216.5"	6.0m/ 236.2"	6.5m/ 255.9"	7.0m/ 275.6"	
0.25m (9.8")																		
0.5m (19.7")																		
0.75m (29.5")																		
1.0m (39.4")																		
1.25m (49.2")																		
1.5m (59.1")																		
1.75m (68.9")																		
2.0m (78.7")																		
2.25m (88.6")																		
2.5m (98.4")																		
2.75m (108.3")																		
3.0m (118.1")																		
3.25m (128.0")																		
3.5m (137.8")																		
3.75m (147.6")																		
4.0m (157.5")																		
4.25m (167.3")																		
4.5m (177.2")																		
4.75m (187.0")																		
5.0m (196.9")																		
5.25m (206.7")																		
5.5m (216.5")																		
5.75m (226.4")																		
6.0m (236.2")																		



Contact your accredited Louvolite manufacturer for further details about cassette and fascia systems.